

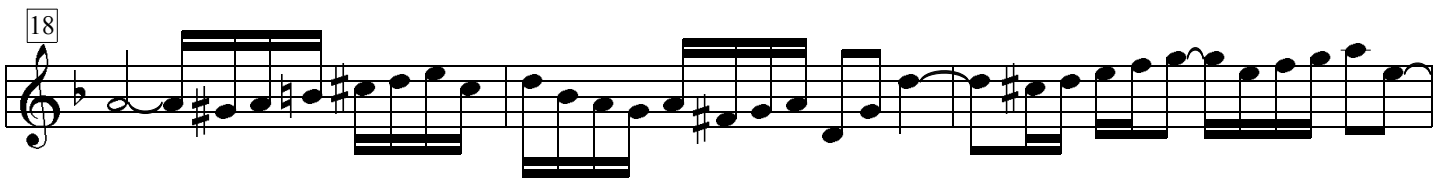
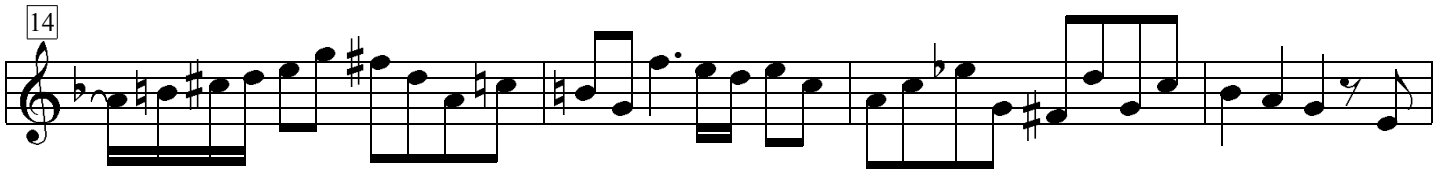
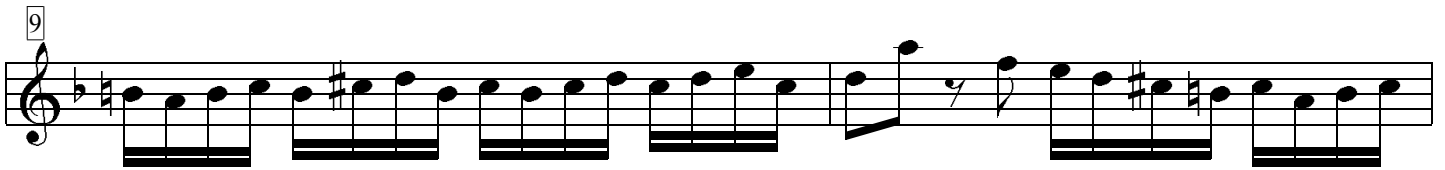
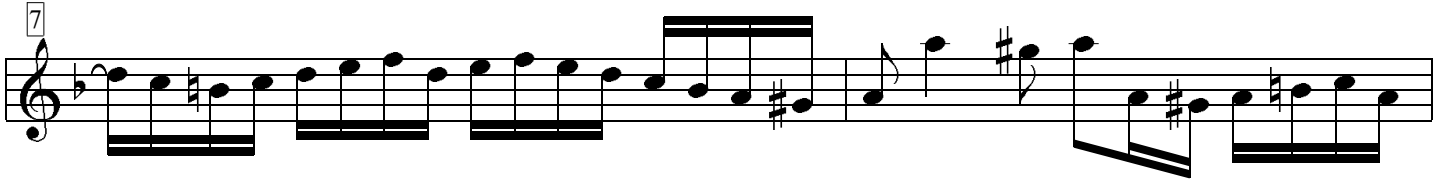
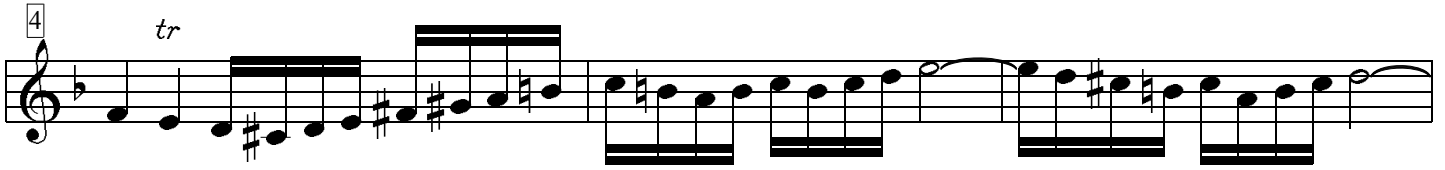
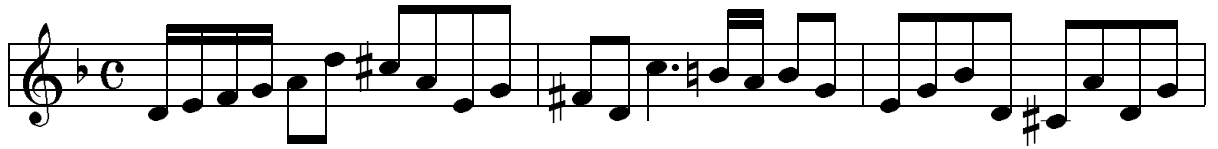
Concerto

BWV 1043

J. S. Bach

1. Vivace

Violino 2



39 *2 p* *2 f*

47

52 *f*

57 *p*

63

66

69 *2*

74 *2 2*

81 *2 f*

87

Detailed description: This image shows a page of musical notation for the first part of J.S. Bach's Invention No. 1043. The score is written on a single treble clef staff in G major (one sharp) and 3/4 time. It consists of ten systems of music, each starting with a measure number in a box. The notation includes various rhythmic values such as eighth and sixteenth notes, often beamed together. There are several dynamic markings: *p* (piano) at measures 39, 57, and 81; *f* (forte) at measures 52 and 81. There are also several fermatas and repeat signs. The piece concludes with a final cadence in measure 90.

2. Largo ma non tanto

Violino 2

5

9

13

17

21

26

32

37

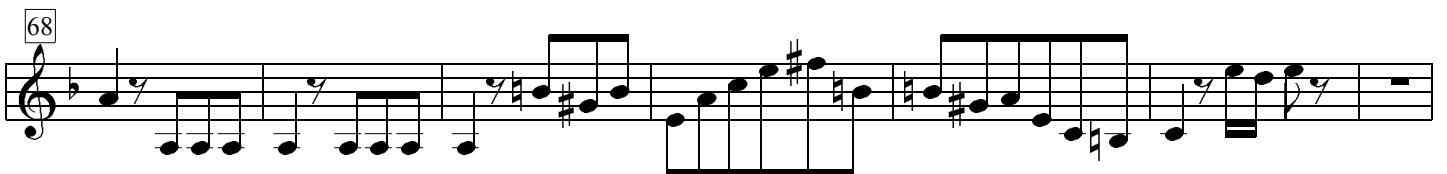
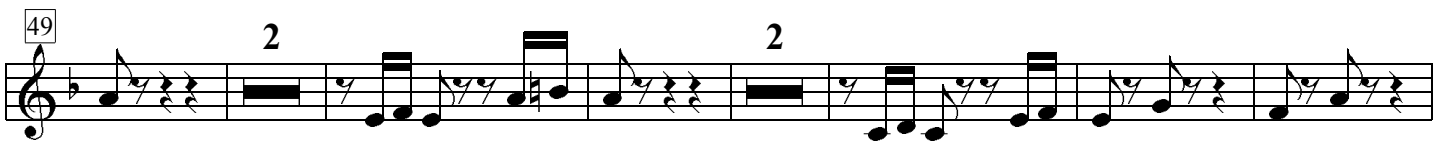
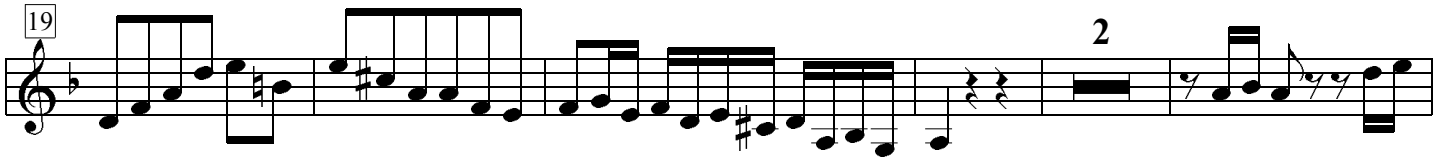
42

47

p *f*

3. Allegro

Violino 2



75

84

90

97

107

114

123

128

132

137

144

152